

## How to run the new ProNav update

Below is a guide on how to run the ProNav update. We recommend if possible, that you print out these instructions before running your update. Before you run the update ensure you can connect your SatNav to your PC. This update will wipe the memory on your device, so you will need to reload any favourites you have back onto your device once the update is complete. It will not wipe any safety camera subscriptions; the software update does not affect the safety cameras at all. **Running the update can often take up to an hour and once you have started running the update, you cannot interrupt it or cancel halfway through!**

If you require any help whilst running this update, or would like somebody to run through the update with you, please contact our support team on 0844 4994 554. **Please delete any music or video files you have on your SD Card as the update is just about big enough to fit on the card and will not fit if any unnecessary files are there.**

1. First ensure you have a PNN200 (see below for details). If you have a PNN100, you cannot run this update on your device. Please contact our support team for details.

ProNav UK (PNN200)



ProNav Europe (PNN200E)

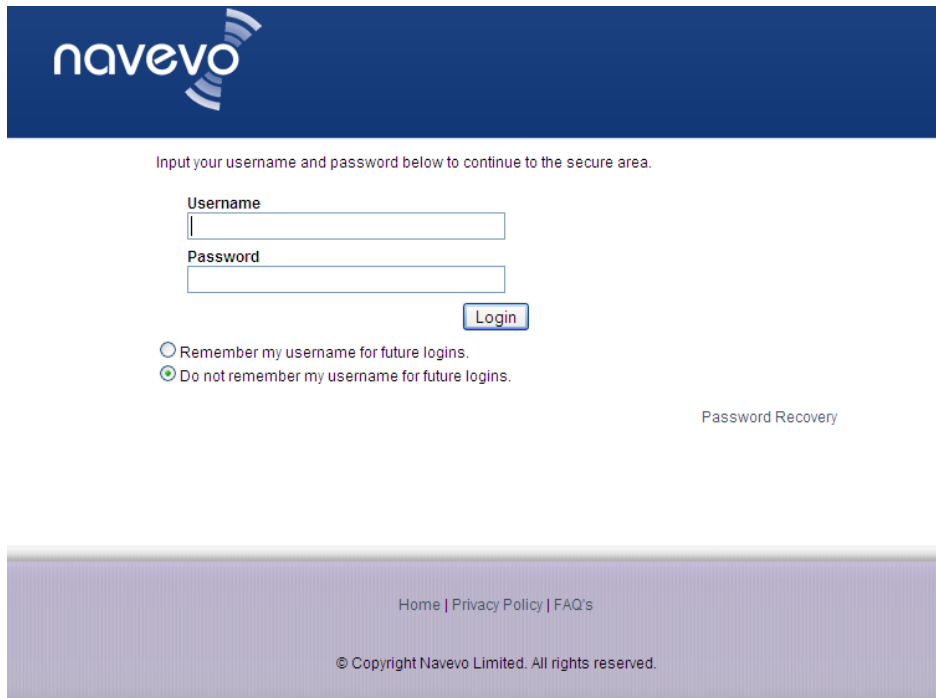


Maplin ProNav (PNN100 - Discontinued)



Don't run upgrade on this device!

2. On the email you received there is a link directing you to the login page. Click this link and you will be taken to the below page:



navevo

Input your username and password below to continue to the secure area.

Username

Password

Login

Remember my username for future logins.

Do not remember my username for future logins.

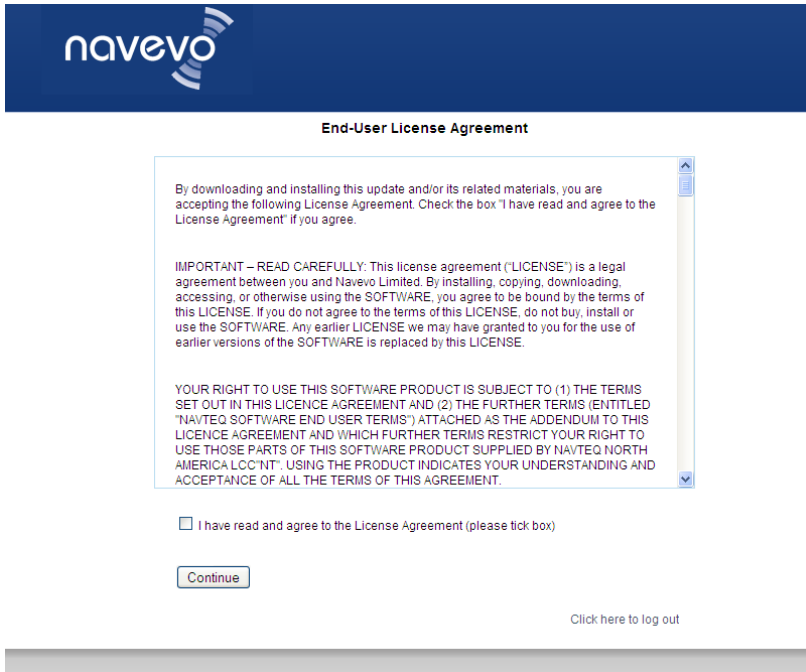
Password Recovery

Home | Privacy Policy | FAQ's

© Copyright Navevo Limited. All rights reserved.

3. You will need to enter in the login details that are provided on your email. These login details are changed once a week, so we recommend downloading the update as soon as you receive the email. Enter in the correct login details and click on “Login”

4. You will then be presented with the below page. Read the license agreement and then click on the box next to "I have read and agree to the License Agreement". Once you have done this click "Continue".



The screenshot shows a web page with a dark blue header containing the "navevo" logo. Below the header is a white box titled "End-User License Agreement". Inside this box, there is a scrollable area containing the following text:

By downloading and installing this update and/or its related materials, you are accepting the following License Agreement. Check the box "I have read and agree to the License Agreement" if you agree.

**IMPORTANT – READ CAREFULLY:** This license agreement ("LICENSE") is a legal agreement between you and Navevo Limited. By installing, copying, downloading, accessing, or otherwise using the SOFTWARE, you agree to be bound by the terms of this LICENSE. If you do not agree to the terms of this LICENSE, do not buy, install or use the SOFTWARE. Any earlier LICENSE we may have granted to you for the use of earlier versions of the SOFTWARE is replaced by this LICENSE.

YOUR RIGHT TO USE THIS SOFTWARE PRODUCT IS SUBJECT TO (1) THE TERMS SET OUT IN THIS LICENCE AGREEMENT AND (2) THE FURTHER TERMS (ENTITLED "NAVTEQ SOFTWARE END USER TERMS") ATTACHED AS THE ADDENDUM TO THIS LICENCE AGREEMENT AND WHICH FURTHER TERMS RESTRICT YOUR RIGHT TO USE THOSE PARTS OF THIS SOFTWARE PRODUCT SUPPLIED BY NAVTEQ NORTH AMERICA LCC'NT. USING THE PRODUCT INDICATES YOUR UNDERSTANDING AND ACCEPTANCE OF ALL THE TERMS OF THIS AGREEMENT.

Below the scrollable area, there is a checkbox with the text "I have read and agree to the License Agreement (please tick box)". Below the checkbox is a "Continue" button. At the bottom right of the white box, there is a link that says "Click here to log out".

- You will then be taken to the below page. You need to click on “Click Here to Download” circled in red

### Secure Download Area

#### ProNav Map and Transport Data Updates

Welcome to the secure download area where you will be able to download and install your free 2010 map and transport database updates for ProNav and ProNav Europe.

**Warning: DO NOT install these updates on any other navigation system as they are designed only to be used on a ProNav navigation system. Failure to follow the instructions correctly could damage your SD card and any SD cards that require replacement due to incorrect installation replacement might well be chargeable.**

Please follow the instructions below.

When you click the download link below, you will be asked whether you wish to 'run' or 'save' the file, please ensure that you select the 'save' option. You will be asked to choose a location to save the file, we recommend you choose 'My Documents' or your 'Desktop' so you can easily locate the file on your PC system once it has been downloaded.

Once you have successfully downloaded and located the file on your PC, double click on the icon using your mouse to unzip the pack. If you do not have a copy of Winzip on your computer then you can obtain an evaluation version by [Clicking Here](#) (opens a new web page).

It is recommended that you read the installation manual carefully first before running the map update software. [Click here to read the installation instructions first.](#)

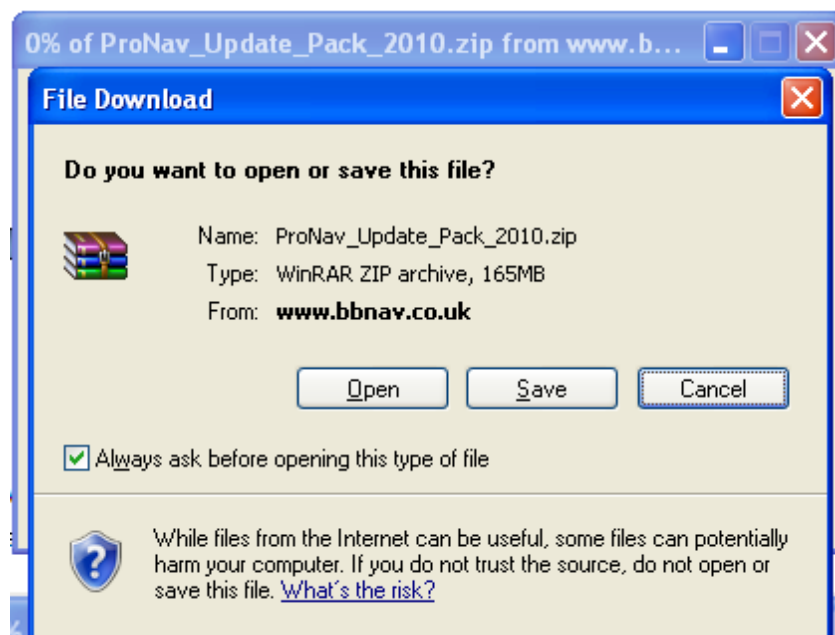
The update is also available on CD at a cost of £4.99, [Click Here to purchase the CD.](#)

ProNav Full Update Pack (PNN200 Only)  
size 166 Mb

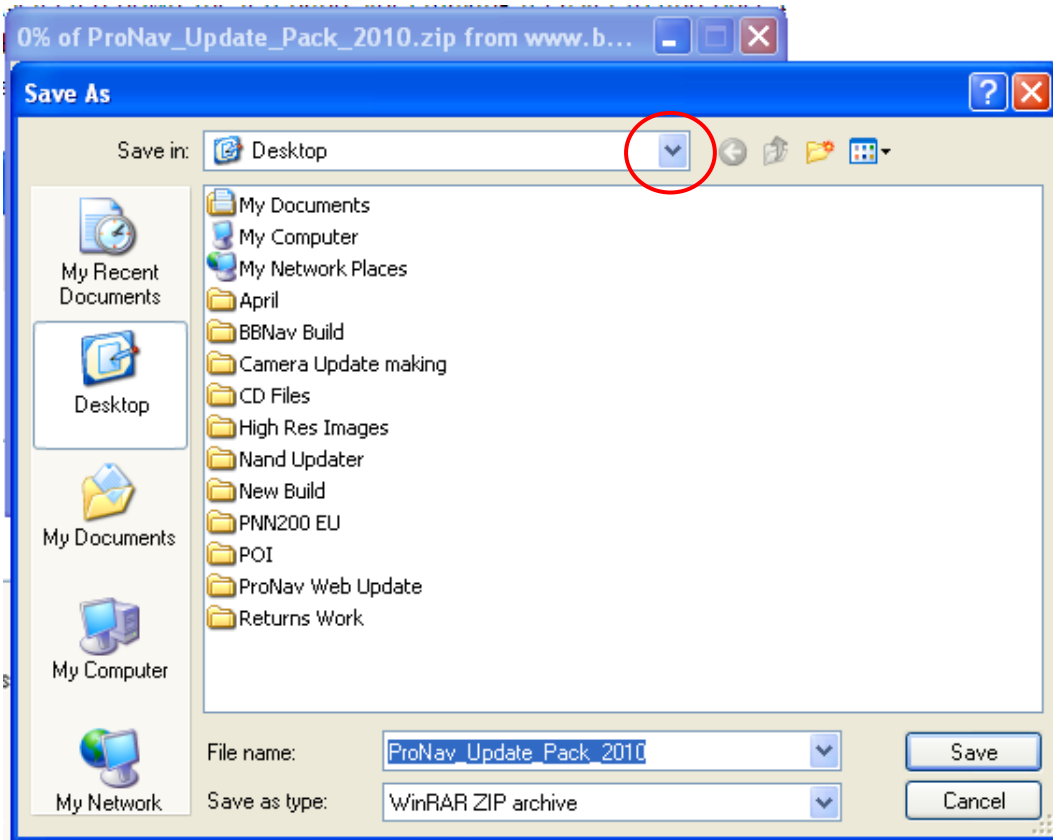
Click  
Here to  
Download

[Click here to log out](#)

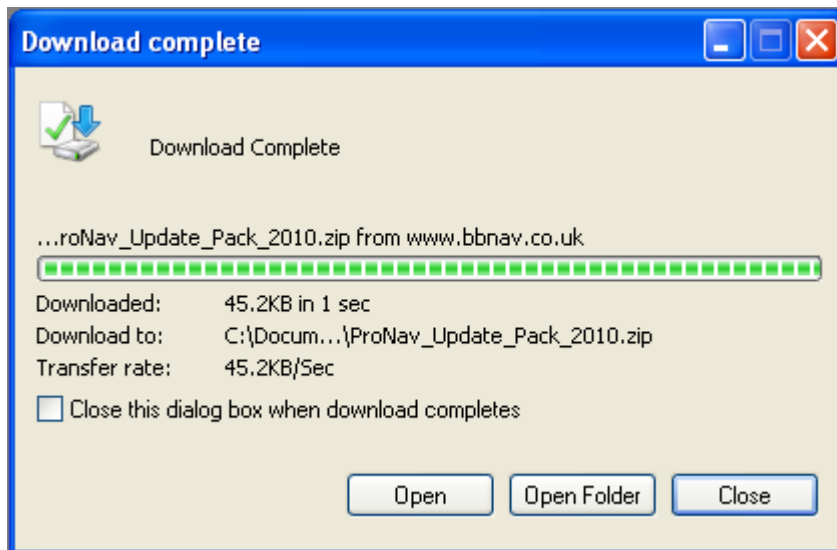
- Next you will need to select “Save” in order to save the download application. So click on “Save” when the below page appears:



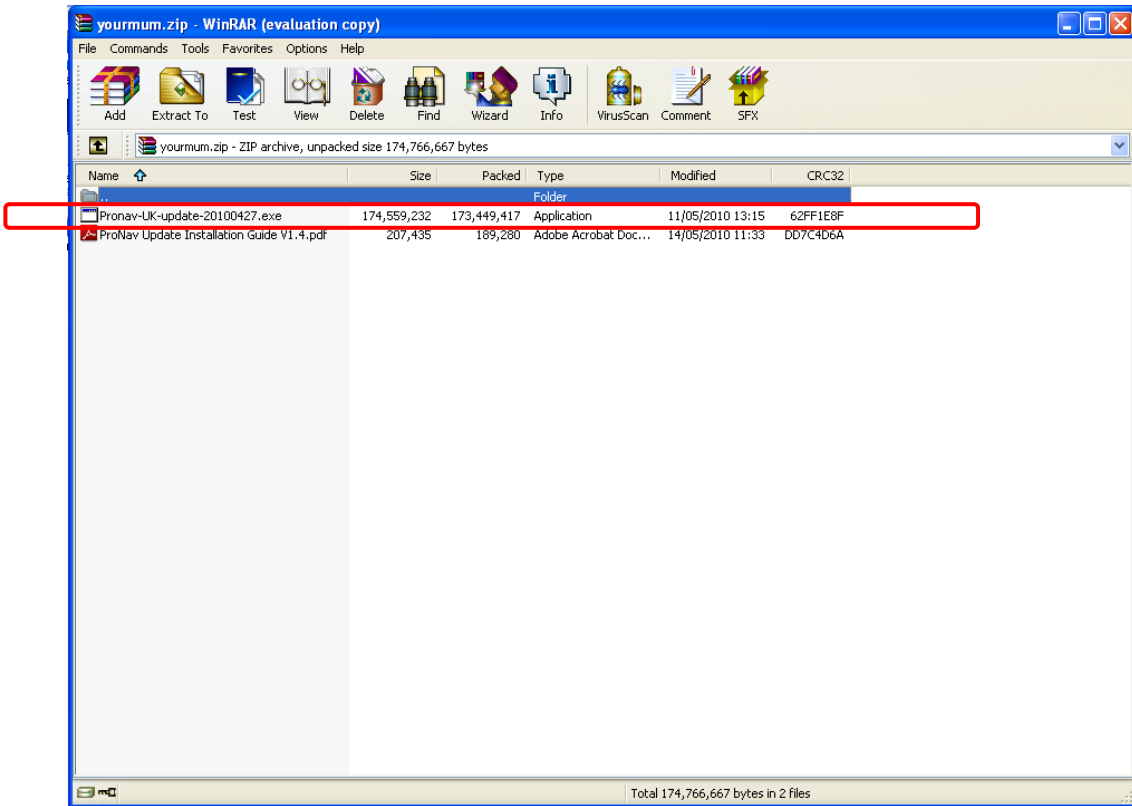
- When save is selected a similar page to the one below will come up (may not look exactly the same). We recommend saving the file to the Desktop by clicking on the drop down arrow, circled in red, and selecting desktop (or desktop can be selected down the left hand side), making it easier to find once the download has been completed. You can change the "File name" if you wish, but we recommend you leave it or make it something easy to remember. When the desktop and filename is selected click on "Save"



- When save has been selected the file will download and you will be presented with an option like the one below, select "Open".

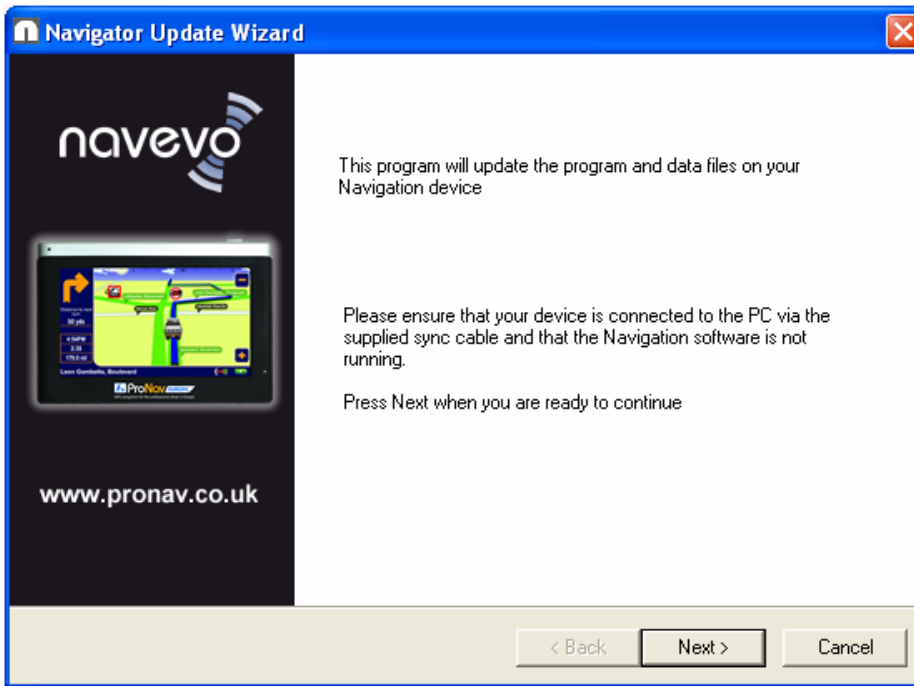


9. You will now be presented with a page like below:



You need to double click on the “Pronav-UK-update-20100427.exe” application, circled in red above.

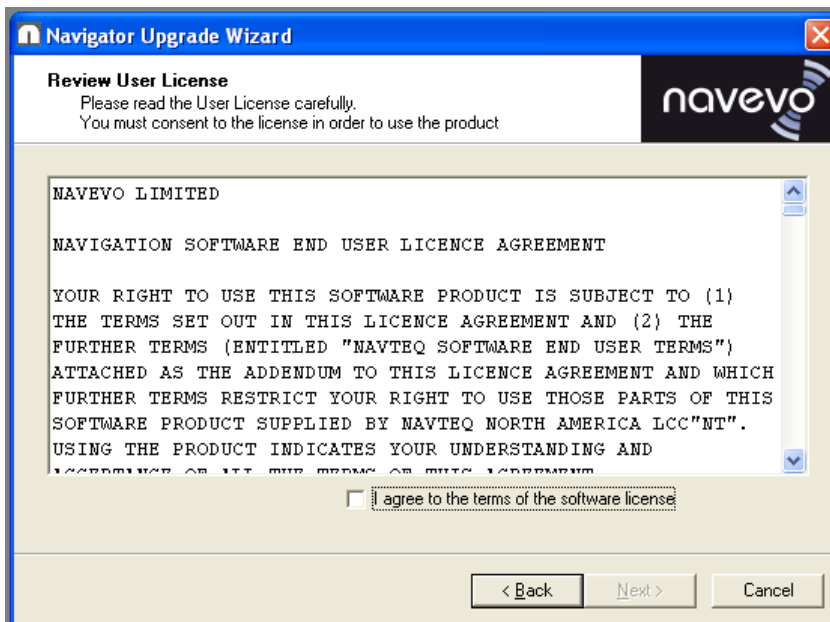
10. Next the below page will appear:



11. Now you will need to connect your SatNav to your PC.

**Make sure before you connect your SatNav, it is turned on, and remains turned on throughout the whole update.**

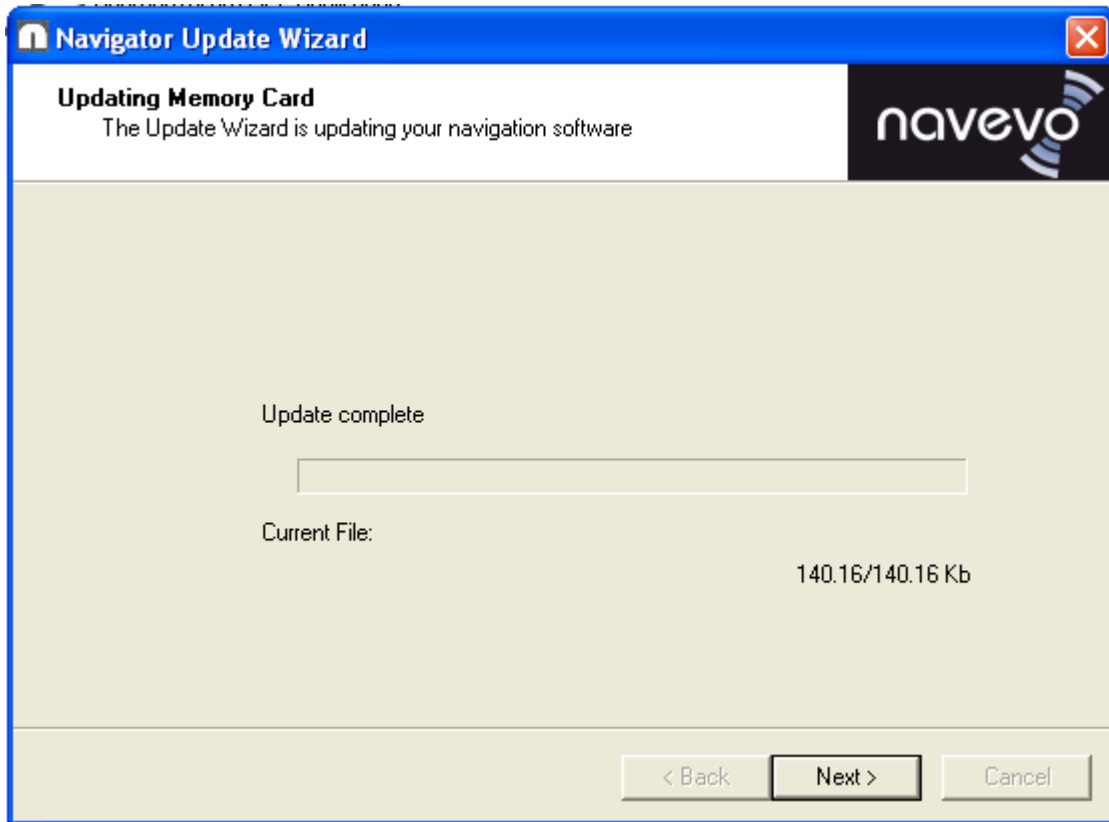
Once it is connected click "Next" and the below page will appear:



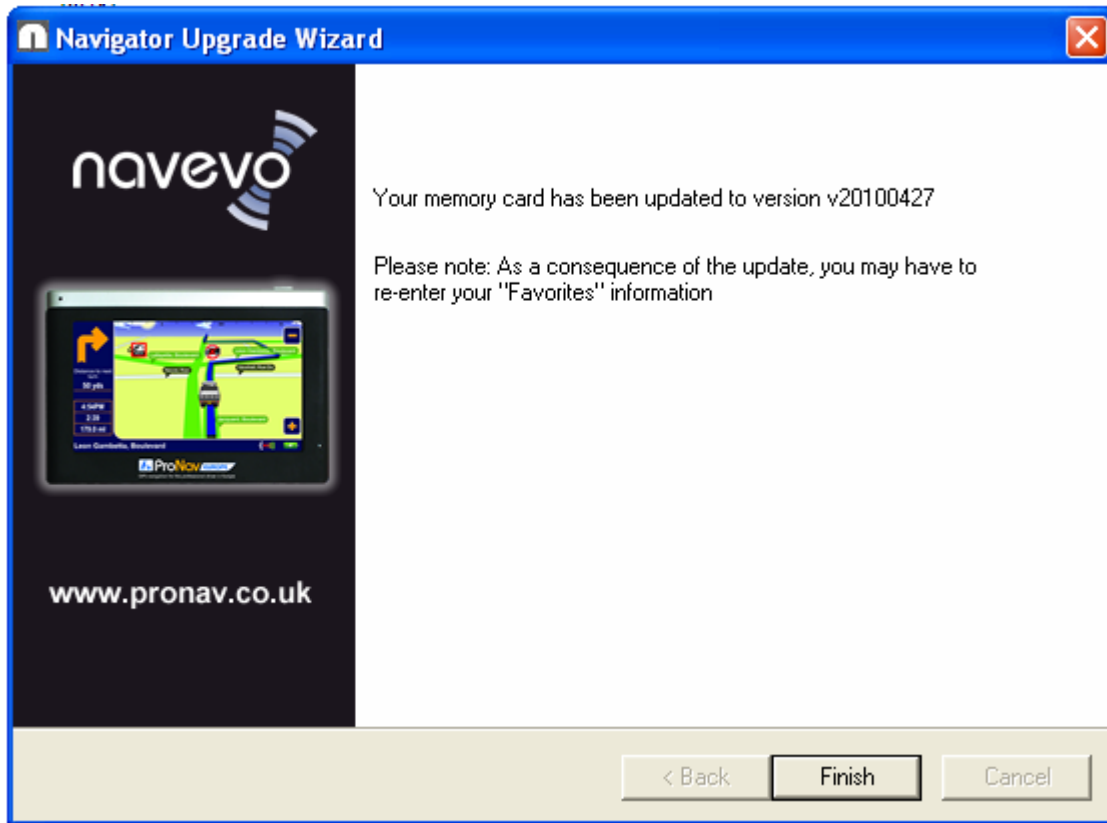
**You will now run the update. DO NOT press Navigation once the update has started! Whilst the update is running you cannot remove the USB lead or cancel the update. If you do, you will ruin your SD Card and will have to purchase a new one!**

Read through and accept the license agreement (by ticking the box) and click "Next".

12. The updater will run through the update until the end. This can take up to an hour depending on what device you have. Once the update has finished, the below page will appear. Click on "Next".



13. Finally the below page will appear



Click on "Finish" and the update programme will close. **Disconnect your device from your PC, ensuring if you have connected it via USB mode you disconnect it safely.**

Congratulations your device has now been fully update. You will need to reinstall your favourites as your device will have been wiped.